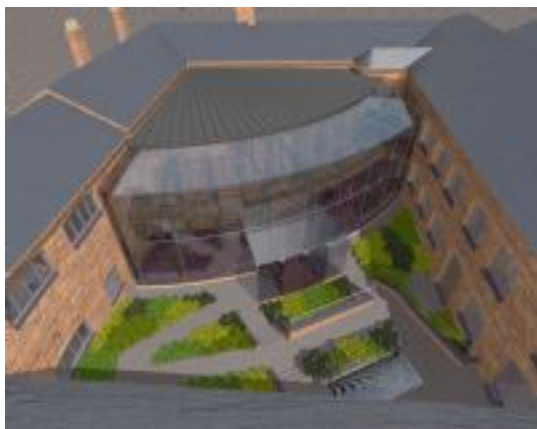


Austin Court



Client:	Institution of Electrical Engineers
Location:	Birmingham
Year:	1997
Total Value:	£2.5m
Services Value:	£450k
Duties:	Mechanical and Electrical Services Performance Design

Design Team:

Project Manager:	Chesterton International
Architect:	Rubicon
Quantity Surveyor:	Edmund Shipway
Structural Engineer:	Cameron Taylor Bedford
Main Contractor:	Kendrick Construction
Electrical Contractor:	MITIE Engineering
Mechanical Contractor:	MITIE Engineering

Description of Project:

The building eventually known as Austin Court was originally a derelict listed building.

The project was to refurbish the building to provide state of the art conferencing and lecture facilities for the institute of Electrical Engineers.

The final result provides an industrial feel within the building which was at some stage during its life a garage, a needle factory, with its routes firmly within an industrial heritage. The building is now well used and a credit to the Institution of Electrical Engineers.